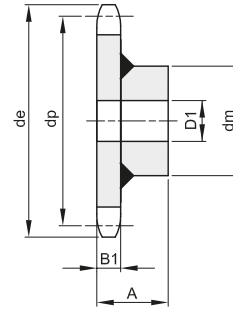
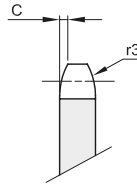




# PIGNI PER CATENE TRASPORTO SPROCKETS FOR CONVEYOR CHAINS

**PASSO 50,8  
RULLO 30**



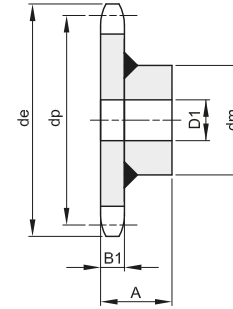
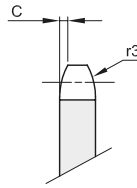
B1	C	r3
8,8	3	50

Materiale: Fe

Z	de	dp	codice	dm	D1	A	Kg.
8	149,0	132,74	332570008	58	20	39	1,35
10	182,0	164,39	332570010	88	20	44	2,85
12	214,0	196,27	332570012	88	25	44	3,37
14	247,0	228,29	332570014	88	25	44	4,08
16	279,0	260,39	332570016	118	30	59	7,34

Z	de	dp	codice	dm	D1	A	Kg.

**PASSO 75  
RULLO 25**



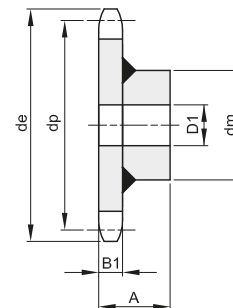
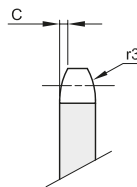
B1	C	r3
10,5	3	50

Materiale: Fe

Z	de	dp	codice	dm	D1	A	Kg.
8	211,0	195,98	332600008	88	25	45,5	4,07
10	258,0	242,70	332600010	118	25	60,5	7,87

Z	de	dp	codice	dm	D1	A	Kg.

**PASSO 75  
RULLO 31**



B1	C	r3
13,5	3	50

Materiale: Fe

Z	de	dp	codice	dm	D1	A	Kg.
6	168,0	150,00	332610006	88	25	48,5	3,26
8	215,0	195,98	332610008	88	25	48,5	4,52
9	238,0	219,30	332610009	88	25	48,5	5,36
10	261,0	242,70	332610010	118	30	63,5	8,70
11	286,0	266,25	332610011	118	30	63,5	9,60
12	309,0	289,80	332610012	118	30	63,5	10,73

Z	de	dp	codice	dm	D1	A	Kg.
13	333,0	313,42	332610013	118	30	63,5	11,83
14	357,0	337,05	332610014	118	30	63,5	13,15
15	380,0	360,73	332610015	118	30	63,5	14,45
16	404,0	384,45	332610016	133	30	65,0	17,43
20	499,0	479,40	332610020	133	30	65,0	23,80
21	523,0	503,17	332610021	133	30	65,0	26,07